

TIIG
INJURY SURVEILLANCE IN THE NORTH WEST OF ENGLAND

CUMBERLAND INFIRMARY EMERGENCY DEPARTMENT

MONTHLY BULLETIN: OCTOBER 2013 TO SEPTEMBER 2014

This bulletin provides a breakdown of all injury attendances to Cumberland Infirmary Emergency Department (ED) between October 2013 and September 2014.

During this twelve month period there were 23,550 injury attendances. The month with the highest number of attendances, calculated as a daily average, was June 2014 (73 per day) compared to December 2013 and January 2014, the months with the fewest (58 per day each; **Figure 1**).

There were more males than females attending the ED in this period (males=12,339; 52%; **Figure 1**). Just over three in ten (31%) were aged between 30 and 59 years (n=7,348), followed by 28% aged 60 years and above (n=6,695) and 24% aged between 15 and 29 years (n=5,609; **Figure 2**).

Table 1 shows the injury group of attendances between October 2013 and September 2014. The majority (80%) of attendances were categorised as 'other' injury (n=18,949). Sports injury accounted for 8% of attendances (n=1,901) while deliberate self-harm (n=1,036) and road traffic collisions (n=970) each accounted for 4% of attendances.

The referral source to the ED is detailed in **Table 2**. Over half (54%) self-referred (n=12,673) while over one in five (22%) were referred by the emergency services (n=5,181) and 17% were referred by a general medical practitioner (n=4,030).

Table 3 illustrates the incident location. The primary injury location was the home where over half (54%)

of incidents occurred (n=12,744), while one-third (33%) were recorded as 'other' location (n=7,658).

The discharge destination for ED attendances is displayed in **Table 4**. Over two-fifths (44%) were discharged from hospital with no follow-up treatment required (n=10,316). Just over one-quarter (27%) were admitted to hospital (n=6,285) and 14% were referred to an outpatient clinic (n=3,254).

Assault attendances

Between October 2013 and September 2014 there were 694 assault-related injury attendances to Cumberland Infirmary ED.

Three-quarters (75%) of attendees presenting to the ED with assault-related injuries were male (n=520; **Figure 3**). Just under three in five (57%) were aged between 15 and 29 years (n=393) while 37% were aged between 30 and 59 years (n=259; **Table 5**).

The assault location is shown in **Table 6**. Half (50%) of incidents were recorded as occurring in 'other' location (n=346). Over one-quarter (27%) occurred in a public place (n=189) and 18% occurred in the home (n=127).

Table 7 illustrates the disposal method of assault attendances. Almost three-fifths (58%) were discharged from hospital with no follow-up treatment required (n=400), while almost one-fifth (19%) required follow-up treatment (n=134) and 10% were admitted to hospital (n=69).

Figure 1: ED injury attendances by gender and month, October 2013 to September 2014

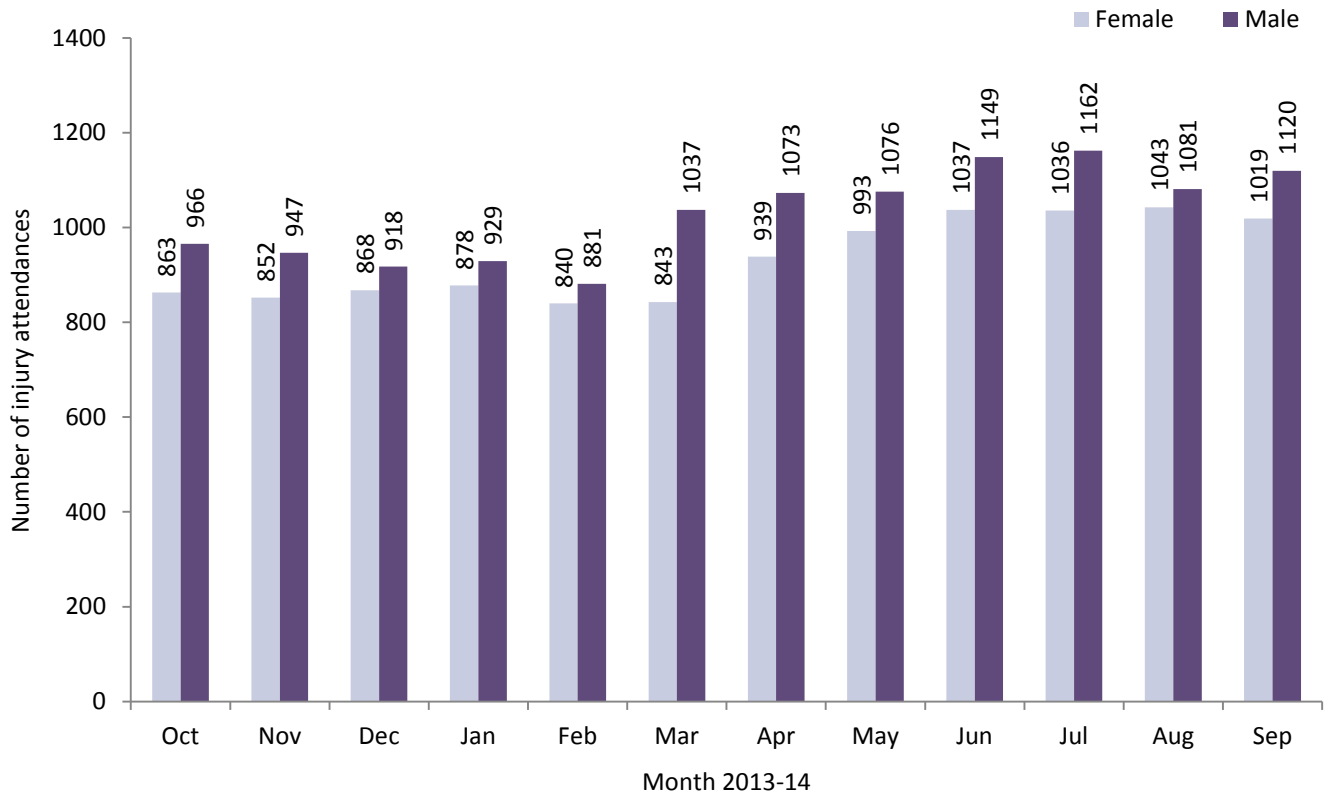


Figure 2: ED injury attendances by age group and month, October 2013 to September 2014

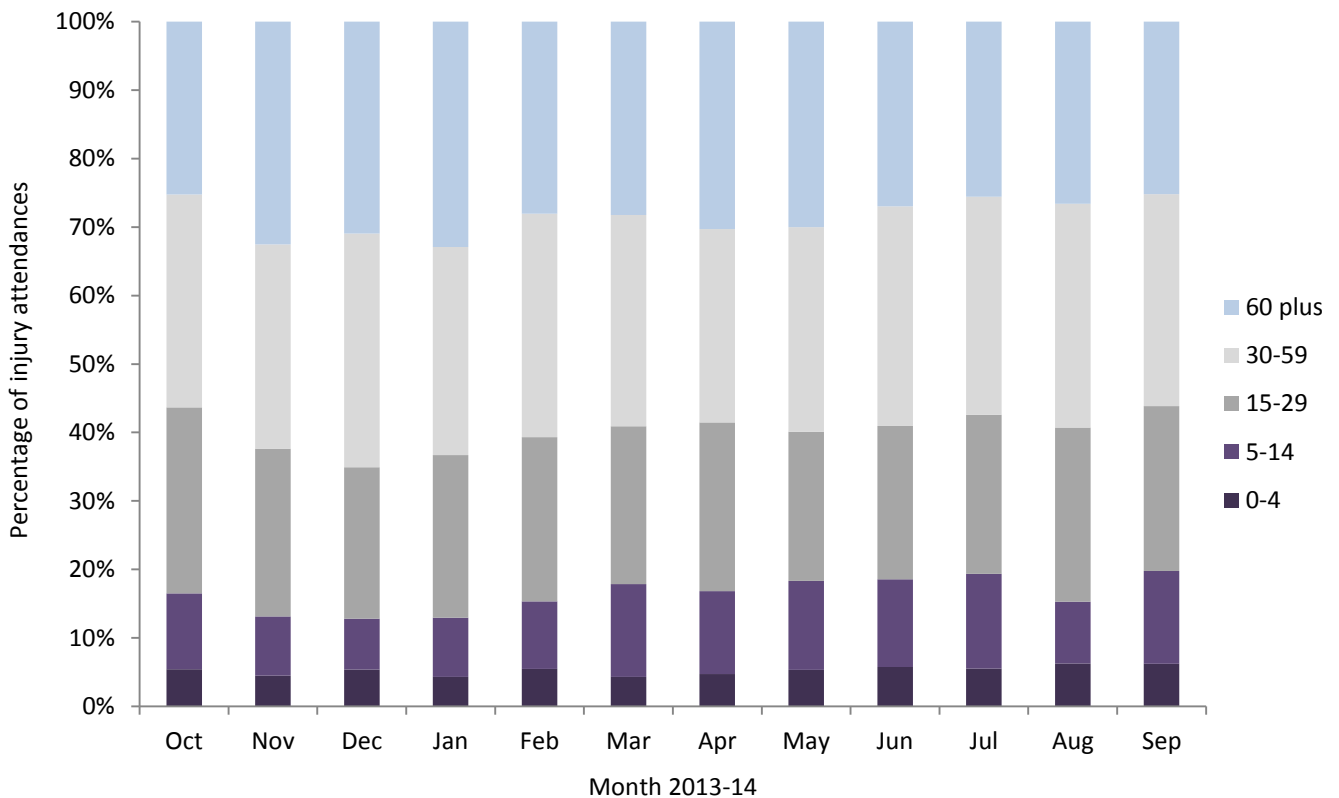


Table 1: ED injury attendances by injury group and month, October 2013 to September 2014¹

Injury group	Oct	Nov	Dec	Jan	Feb	Mar	Apr	May	Jun	Jul	Aug	Sep	Total	%
Other injury	1438	1451	1441	1466	1368	1419	1623	1660	1804	1805	1778	1696	18949	80%
Sports injury	176	152	118	123	130	220	172	169	153	159	114	215	1901	8%
Deliberate self-harm	93	77	77	89	80	95	99	100	65	85	92	84	1036	4%
Road traffic collision	71	65	95	79	76	69	65	82	97	98	83	90	970	4%
Assault	51	54	55	50	67	77	53	58	67	51	57	54	694	3%
Total	1829	1799	1786	1807	1721	1880	2012	2069	2186	2198	2124	2139	23550	100%

Table 2: ED injury attendances by referral source and month, October 2013 to September 2014^{1,2}

Referral source	Oct	Nov	Dec	Jan	Feb	Mar	Apr	May	Jun	Jul	Aug	Sep	Total	%
Self-referral	1036	877	884	864	947	1030	1076	1106	1203	1261	1189	1200	12673	54%
Emergency services	369	378	433	430	405	448	428	482	404	482	473	449	5181	22%
General medical practitioner	287	402	342	393	264	281	361	345	398	305	321	331	4030	17%
Other	67	79	65	69	60	69	86	78	92	81	88	96	930	4%
Work	26	27	21	22	18	21	23	23	44	27	26	30	308	1%
Health care provider	25	19	25	17	16	13	26	23	28	24	19	19	254	1%
Police	11	10	<15	<10	<15	10	7	5	9	<15	8	9	115	0%
Educational establishment	8	7	***	***	***	8	5	7	8	***	0	5	59	0%
Total	1829	1799	1786	1807	1721	1880	2012	2069	2186	2198	2124	2139	23550	100%

Table 3: ED injury attendances by incident location and month, October 2013 to September 2014¹

Incident location	Oct	Nov	Dec	Jan	Feb	Mar	Apr	May	Jun	Jul	Aug	Sep	Total	%
Home	940	1020	998	1115	909	934	1152	1140	1164	1122	1187	1063	12744	54%
Other	583	530	577	483	575	625	613	647	712	766	772	775	7658	33%
Public place	145	114	112	97	113	148	112	133	166	175	108	147	1570	7%
Work	76	79	48	42	61	80	84	87	73	75	57	67	829	4%
Educational establishment	85	56	51	70	63	93	51	62	71	60	0	87	749	3%
Total	1829	1799	1786	1807	1721	1880	2012	2069	2186	2198	2124	2139	23550	100%

Table 4: ED injury attendances by discharge destination and month, October 2013 to September 2014^{1,3}

Discharge destination	Oct	Nov	Dec	Jan	Feb	Mar	Apr	May	Jun	Jul	Aug	Sep	Total	%
Discharged - no follow-up	895	763	834	720	859	827	835	875	912	1034	869	893	10316	44%
Admitted to hospital	452	570	523	592	439	446	555	590	574	475	547	522	6285	27%
Outpatient clinic	229	240	201	214	220	292	284	304	339	322	317	292	3254	14%
Discharged - follow-up care by GP	92	62	63	103	73	145	153	130	166	179	203	238	1607	7%
Other	52	53	54	71	29	35	38	34	47	51	47	39	550	2%
Referred to other health care professional	32	41	34	30	31	59	46	45	45	36	48	46	493	2%
Left department before being treated	33	22	33	31	36	31	50	49	47	40	50	51	473	2%
Referred to ED clinic	30	28	30	31	24	28	34	29	35	38	28	37	372	2%
Transferred to other HCP	<15	<20	<15	15	10	<20	12	<15	17	20	<15	<20	172	1%
Left department having refused treatment	***	***	***	0	0	***	***	***	***	***	***	***	<30	0%
Died in department	0	0	0	0	0	0	***	0	***	***	0	0	***	0%
Total	1829	1799	1786	1807	1721	1880	2012	2069	2186	2198	2124	2139	23550	100%

¹ Please note that all numbers less than five have been suppressed (with ***) in line with patient confidentiality. If there is only one number less than five in a category then two numbers have been suppressed to prevent back calculations from totals.

Percentages may not add up to 100% due to rounding.

² 'Other' includes general dental practitioner, local authority social services and other.

³ GP = General practitioner; HCP = Health Care Provider.

ASSAULTS

Figure 3: ED assault attendances by gender and month, October 2013 to September 2014

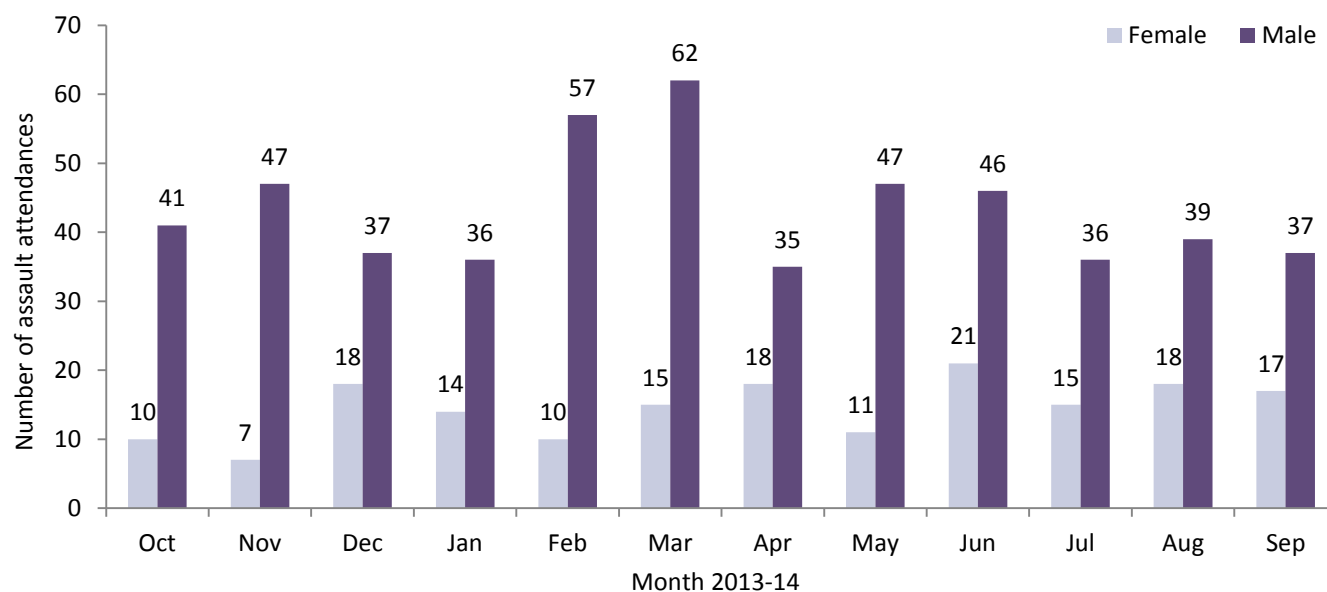


Table 5: ED assault attendances by age group and month, October 2013 to September 2014^{\$4}

Age group	Oct	Nov	Dec	Jan	Feb	Mar	Apr	May	Jun	Jul	Aug	Sep	Total	%
5-14	0	0	***	***	***	<10	***	***	***	***	***	***	26	4%
15-29	32	31	33	30	44	45	29	28	31	30	35	25	393	57%
30-59	19	<25	<25	18	<25	26	20	24	30	17	16	<30	259	37%
60 plus	0	***	0	***	0	***	***	***	***	***	***	0	16	2%
Total	51	54	55	50	67	77	53	58	67	51	57	54	694	100%

^{\$} There were no assault attendances in the 0-4 years category.

Table 6: ED assault attendances by incident location and month, October 2013 to September 2014⁴

Incident location	Oct	Nov	Dec	Jan	Feb	Mar	Apr	May	Jun	Jul	Aug	Sep	Total	%
Other	29	30	28	24	31	38	28	34	22	28	30	24	346	50%
Public place	11	14	15	16	24	21	12	9	25	9	16	17	189	27%
Home	9	<10	10	<10	<10	13	10	12	15	<15	<15	10	127	18%
Educational establishment	***	***	***	***	***	5	***	***	***	***	0	***	23	3%
Work	***	0	***	0	0	0	***	***	***	0	***	***	9	1%
Total	51	54	55	50	67	77	53	58	67	51	57	54	694	100%

Table 7: ED assault attendances by disposal method and month, October 2013 to September 2014⁴

Disposal method	Oct	Nov	Dec	Jan	Feb	Mar	Apr	May	Jun	Jul	Aug	Sep	Total	%
Discharged	29	24	35	34	38	47	30	36	33	29	35	30	400	58%
Follow-up	5	17	8	***	11	18	<15	13	17	8	15	9	134	19%
Other	11	5	7	8	13	7	9	***	9	9	***	8	91	13%
Admitted	6	8	5	<10	5	5	***	<10	8	5	***	7	69	10%
Total	51	54	55	50	67	77	53	58	67	51	57	54	694	100%

Published January 2015
 Trauma and Injury Intelligence Group
 Centre for Public Health, Faculty of Education, Health and Community, Liverpool John Moores University,
 2nd Floor, Henry Cotton Building, Liverpool L3 2ET
 T: 0151 231 4498 | E: tiig@ljmu.ac.uk | W: www.tiig.info and www.cph.org.uk | Twitter: [www.twitter.com/tiig_cph](https://twitter.com/tiig_cph)

⁴ Please note that all numbers less than five have been suppressed (with ***) in line with patient confidentiality. If there is only one number less than five in a category then two numbers have been suppressed to prevent back calculations from totals.

Percentages may not add up to 100% due to rounding.